

Windows: Dirac Live Room Correction Suite (Processor Standalone) - Quick Start Guide

The Dirac Processor Standalone provides desktop-level audio correction by Dirac for Windows 10/11 devices.

In order to use the Dirac Processor Standalone, you will need to download and install two components: the Dirac Live application and the Dirac Processor Standalone (1.7.x).

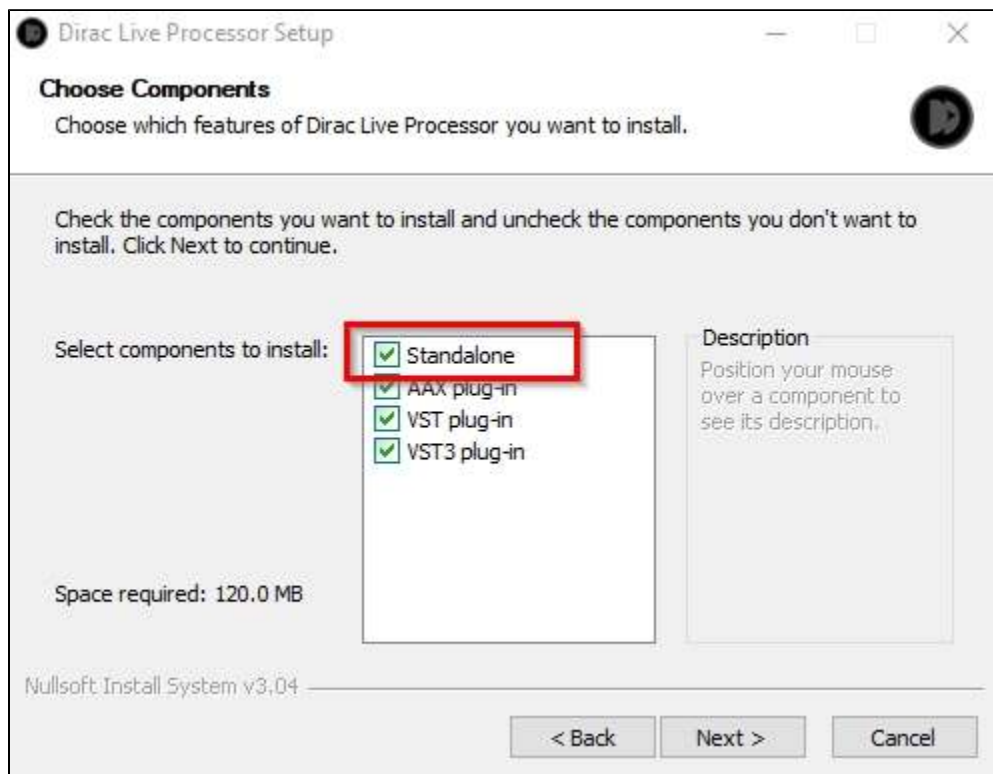
Dirac Live is used to measure and generate filters, while the Processor Standalone stores the corresponding filters and processes audio data.

Please make sure to obtain a valid Dirac license first, so you can log in to the software and be able to use it as intended. You can purchase a license [here](#).

Download and Install Dirac Live and Dirac Processor Standalone

You can download Dirac Live and Dirac Processor Standalone [here](#). Make sure that your computer is connected to the internet for licensing purposes.

Open the files and follow the installation procedures. Make sure to check "Standalone" during the installation process:



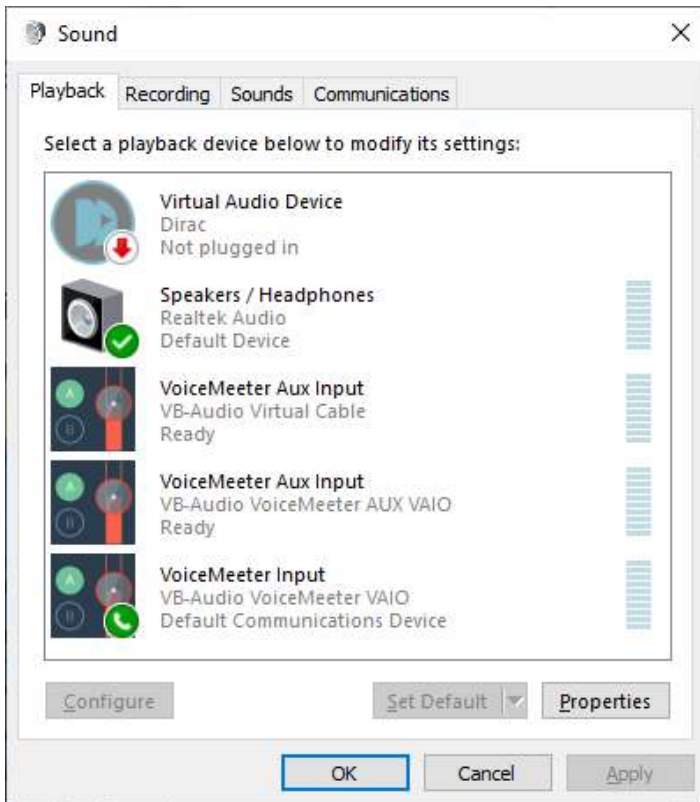
When completed, the Dirac Processor Standalone will be installed to the following location: C:\Program Files\Dirac\Dirac Live Processor

Setup

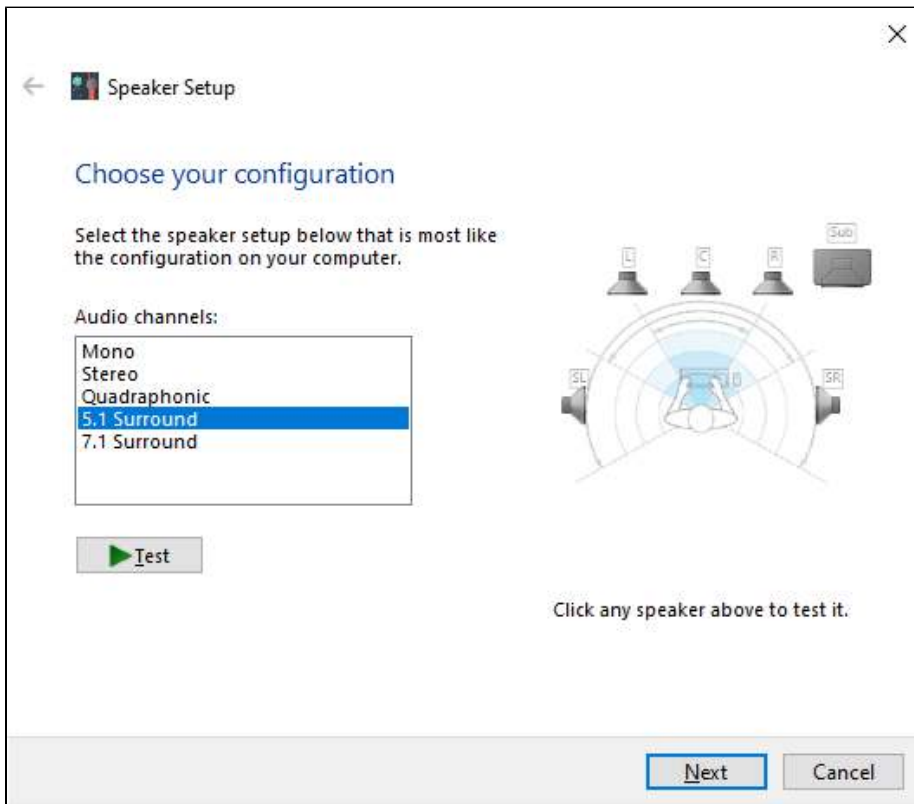
Open the Windows **Control Panel** and select **Sound**. This opens Windows **Sound Settings**.

The Standalone is not active until the application Dirac Processor Standalone is opened.

As soon as the Processor Standalone has been opened, you will see "Virtual Audio Device" in your computer's sound settings:

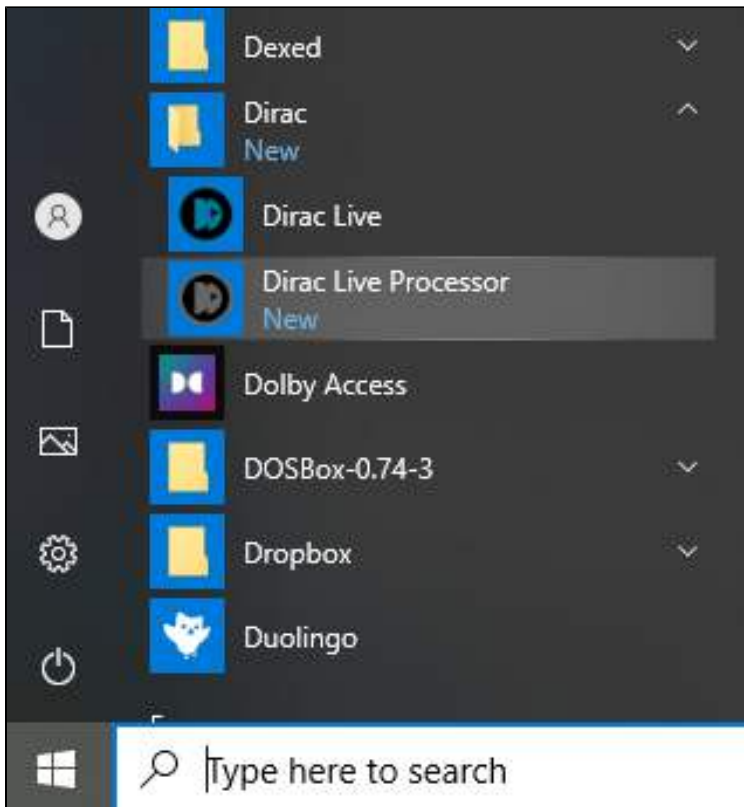


Select your default sound device and click **Configure**.

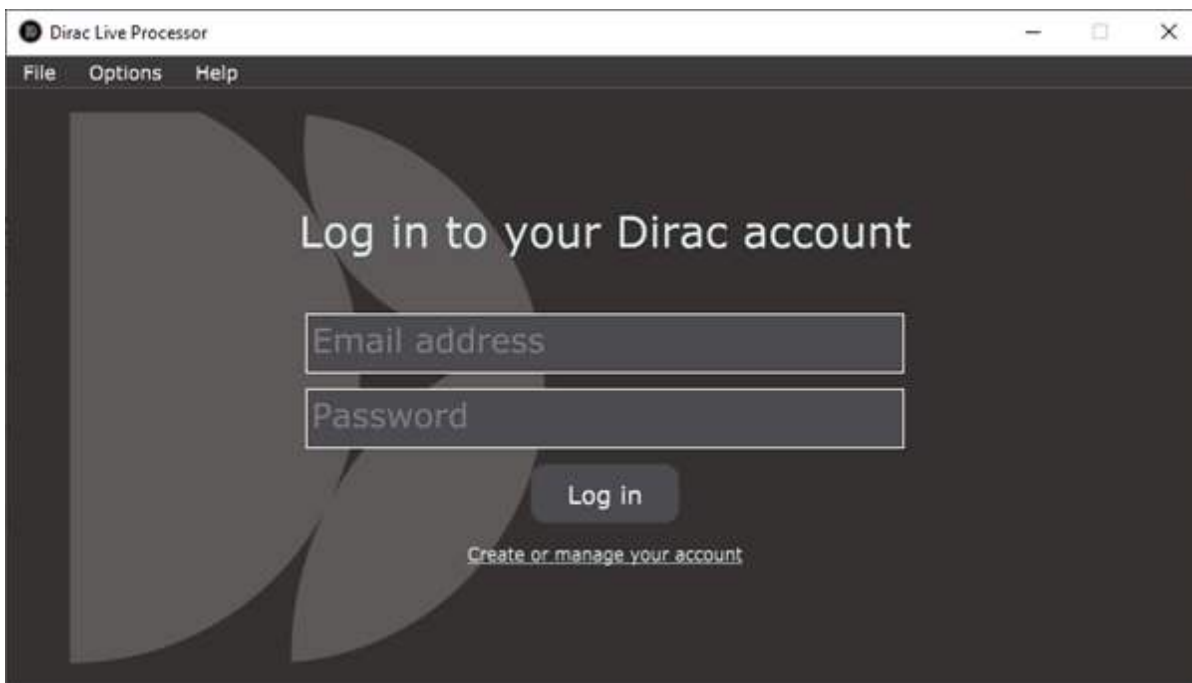


Select the configuration that you want to use. **Note:** For some sound cards that use ASIO, it is not possible or necessary to select a Multichannel configuration here. If you are using WASAPI driver, it is necessary to select the proper configuration.

Open the Dirac Processor Standalone.

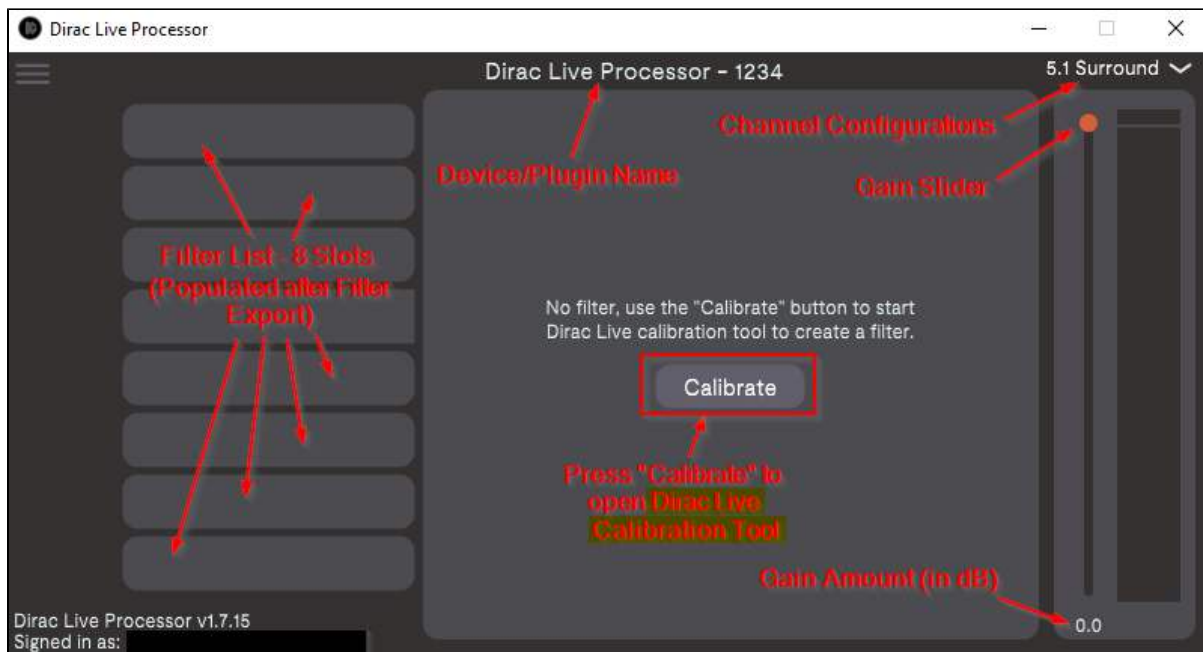


Log in to your Dirac account.

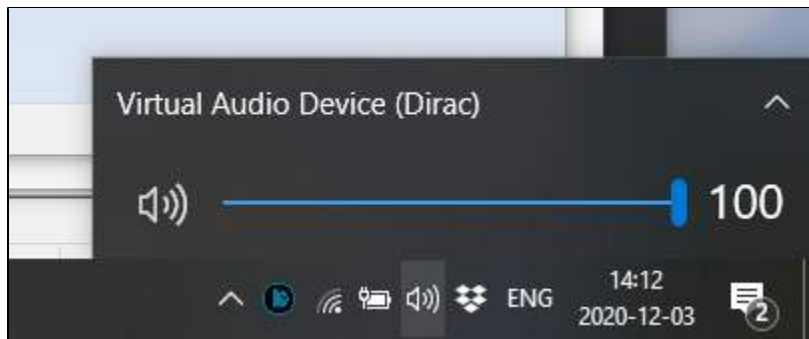


The Processor window will look empty the first time you open it. You will populate this window with filters after you have created them in Dirac Live®.

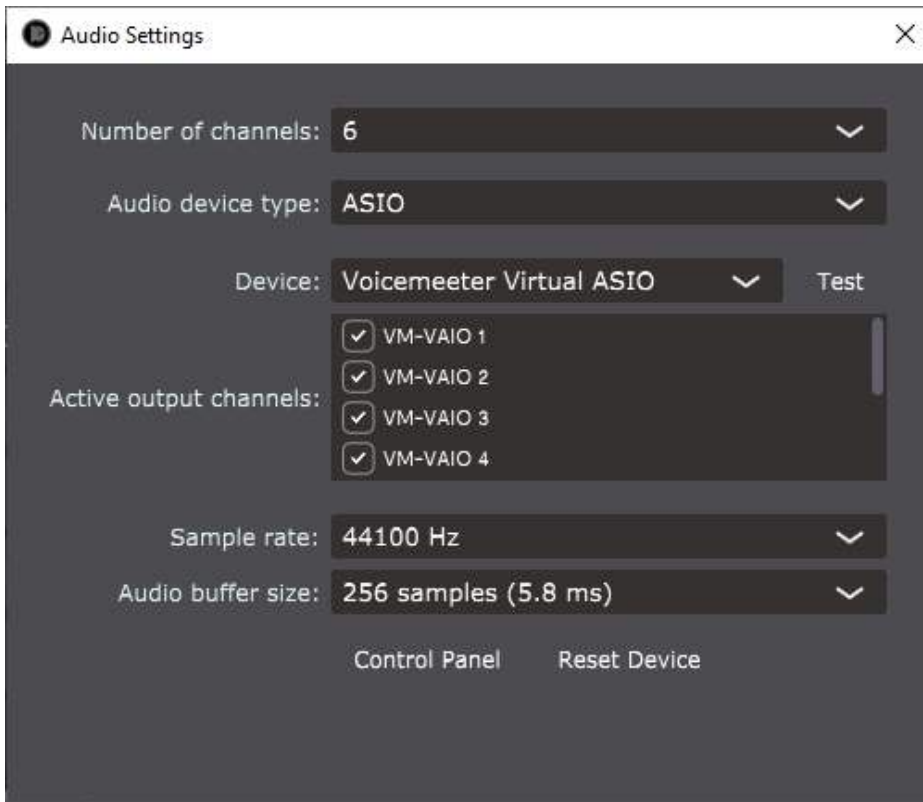
If you haven't downloaded Dirac Live yet, please click the "Calibrate" button in order to download and install it.



After starting Dirac Processor Standalone, the new sound device will be active and selected as the default sound device.



In Dirac Processor Standalone, select Options > Audio Settings. The Audio "device type" may differ depending on your audio interface.



Select the number of channels relevant for your system.

Select Audio Device type from the following (Windows Audio modes are WASAPI modes):

- **Windows Audio** operates in [shared mode](#). The audio pipeline doesn't take full control of the driver. Instead, it shares system audio resources with other applications.
- **Windows Audio (Exclusive Mode)** dedicates all system audio resources to Dirac Processor Standalone and takes over Windows' audio pipeline.
- **Windows Audio (Low Latency Mode)** is an alternate Windows Audio configuration. Low Latency Mode uses the latest available Windows audio interface in a shared mode, but supports low latency.
- **ASIO (Audio Stream Input/Output)** is a third-party sound card driver protocol specified by Steinberg, providing a low-latency and high fidelity interface between Dirac Processor Standalone and the computer's sound card. [Source](#)

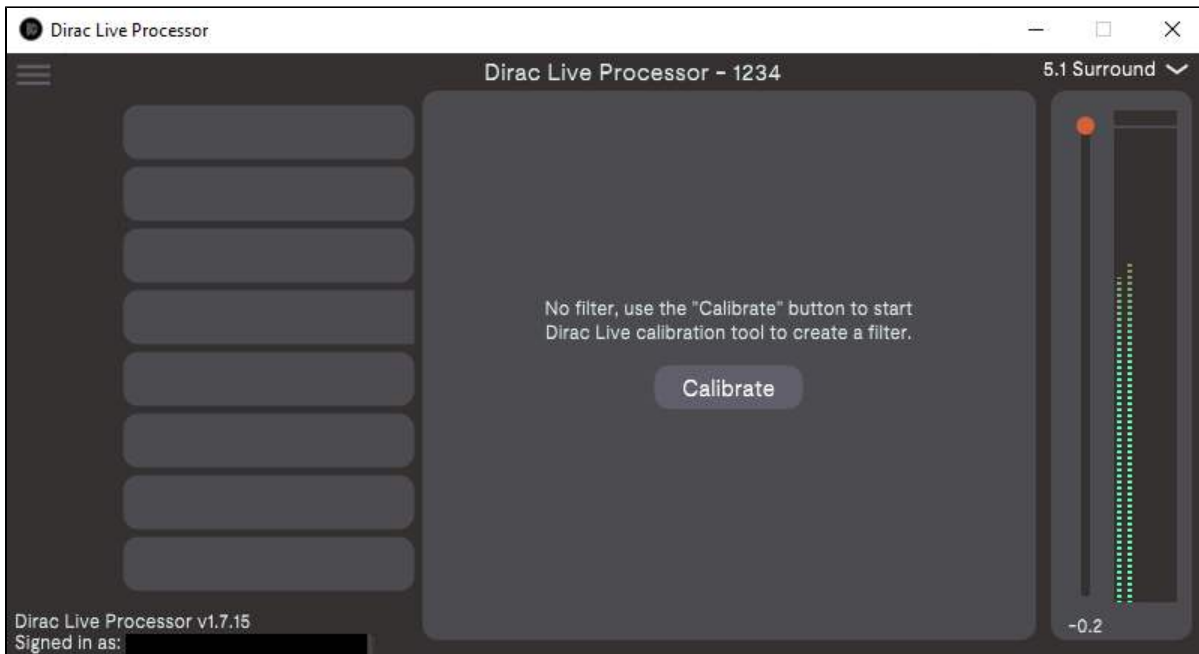
When using Windows Audio settings, you will use the Windows Sound Settings panel (described above) to change channel configuration and sample rate, etc.

When using ASIO settings, you will use Processor + the ASIO driver program to change channel configuration and sample rate, etc.

Select your "normal" sound device as output. If you have a ASIO drivers for your sound card, select ASIO as the Audio Device Type.

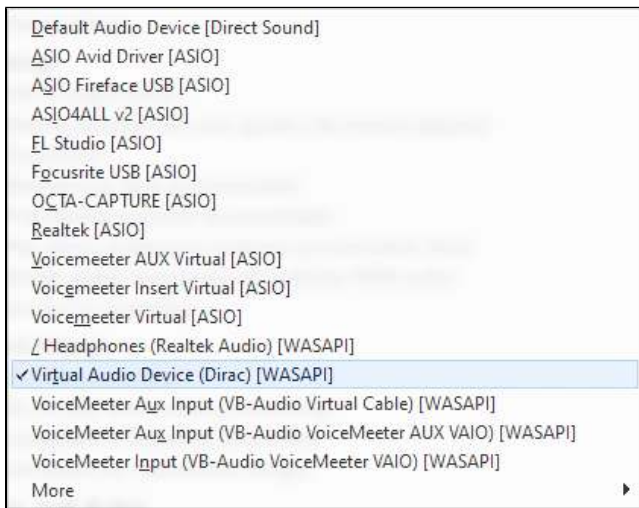
Click "Test" to ensure sound playback is functional. If so, close the Audio Settings window.

Play a sound from your media player or web browser to make sure the level meters are moving and that the sound is audible.



If you experience dropouts in the sound, experiment with different buffer-sizes. 10.0 ms latency is recommended. However, it is not available for some sample rates.

In some media players like JRiver, you need to select the output manually. In this case, make sure "Standalone (Dirac)" is selected.



You are now ready to perform a measurement and create your first filters.